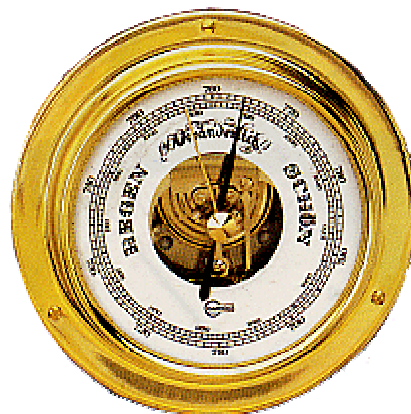


## BAROMETRI

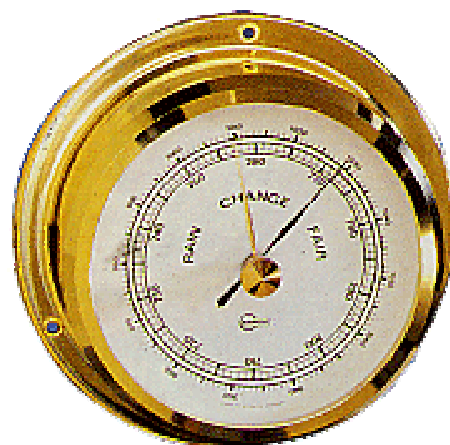
Barometro tipo *Eco*, cassa ottone lucido, originale tedesco

**Art. 67118/a** quadrante diam. 70 mm flangia diam. 88 mm  
**Art. 67118/b** quadrante diam. 85 mm flangia diam. 110 mm  
**Art. 67118/c** quadrante diam. 100 mm flangia diam. 120 mm  
**Art. 67118/d** quadrante diam. 130 mm flangia diam. 155 mm



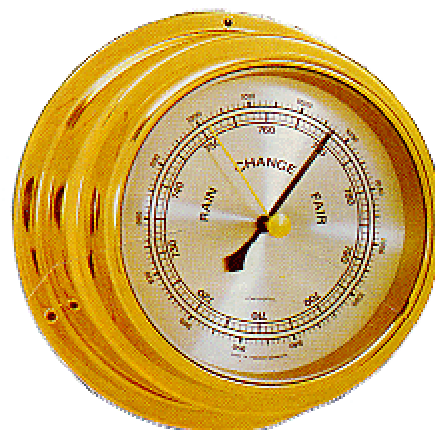
Barometro, cassa ottone lucida, originale tedesco

**Art. 67119** quadrante diam. 85 mm flangia diam. 110 mm



Barometro, cassa ottone lucido, originale tedesco

**Art. 67120** quadrante diam. 100 mm flangia diam. 150 mm



## BAROMETRI

Barometro, cassa ottone lucido, originale tedesco

**Art. 67123/a** quadrante diam. 130 mm flangia diam. 180 mm

**Art. 67123/b** quadrante diam. 150 mm flangia diam. 220 mm



Barometro *Mariner*, cassa ottone lucido o cromata

**Art. 67138/a** quadrante diam. 130 mm flangia diam. 180 mm

**Art. 67138/b** quadrante diam. 150 mm flangia diam. 220 mm



Barometro aneroido, cornice in legno

**Art. 67143/a** quadrante diam. 100 mm flangia diam. 150 mm

**Art. 67143/b** quadrante diam. 130 mm flangia diam. 190 mm

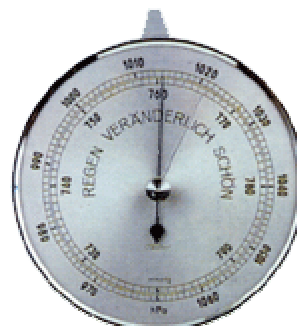


## METEOROLOGIA "FISCHER"

### BAROMETRO, IGROMETRO, TERMOMETRO, TERMOIGROMETRO

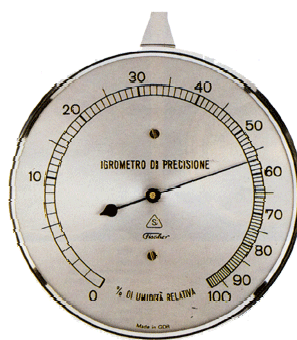
Barometro Fischer con cassa metallica

**Art. 13011** quadrante diam. 100 mm



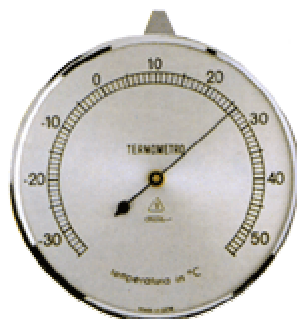
Igrometro Fischer con cassa metallica

**Art. 30001** quadrante diam. 100 mm



Termometro Fischer con cassa metallica

**Art. 55000** quadrante diam. 100 mm



Termoigrometro Fischer con cassa metallica

**Art. 35035** quadrante diam. 100 mm

